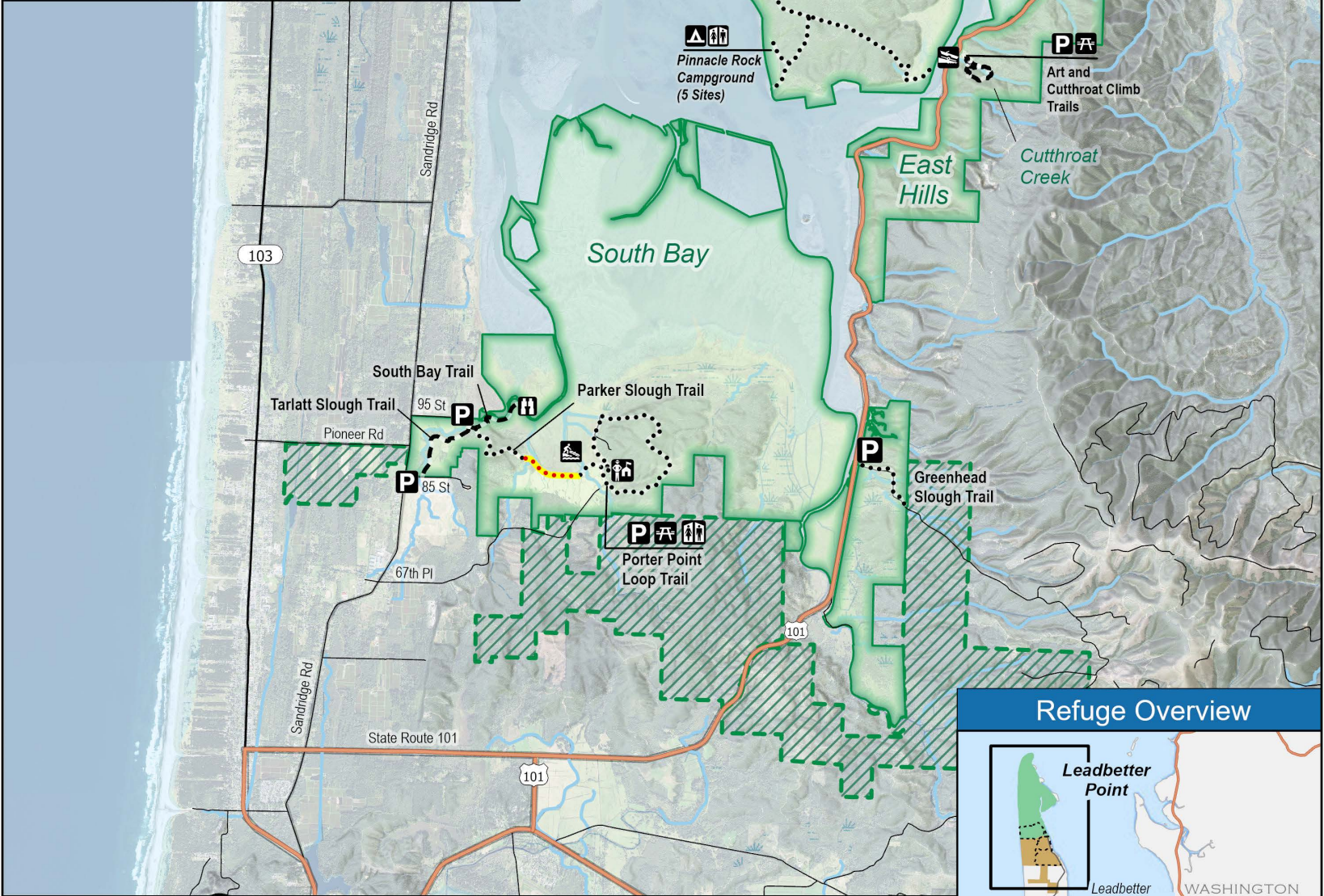
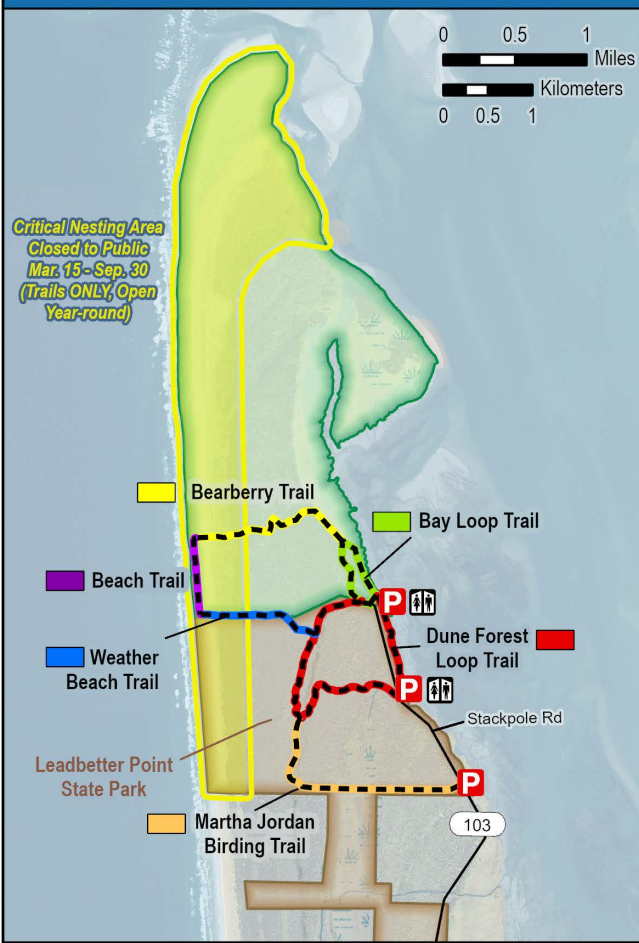
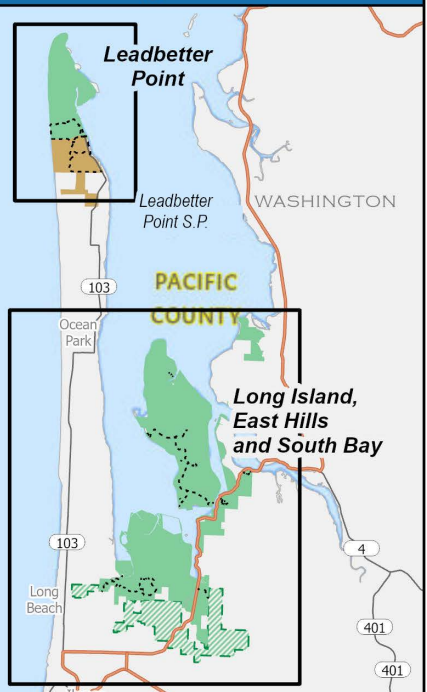


Pacific County, Washington

Leadbetter Point

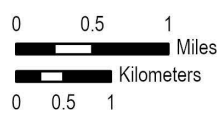


Refuge Overview



Map Key

- Willapa National Wildlife Refuge
- Willapa NWR units currently closed, undergoing legal process to open
- Leadbetter Point State Park
- Critical Nesting Area
- Trails not in hunting areas
- Trails in safety zone within hunting area
- Trail section closed Oct. 1 - Feb. 10
- Refuge Office
- Restroom
- Boat Launch
- Car-top Boat Launch
- Campgrounds
- Parking
- Fee Parking
- Overlook
- Picnic Tables



www.fws.gov/refuge/willapa

Date: 7/5/2024
File: R1_NWRS_FY21_390.aprx